

# The Parish Magazine of St. Oswald's Church Croxley Green



October  
and  
November  
2024





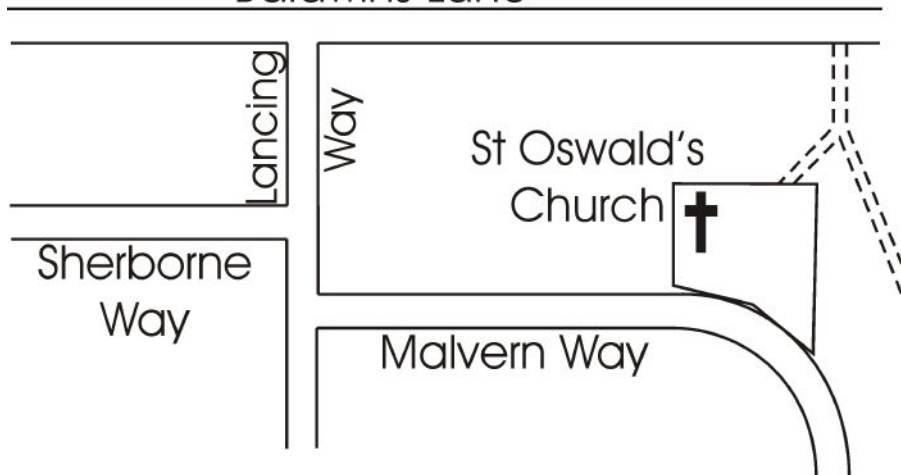
## St Oswald's Church – who are we?

*We are part of the Church of  
England in the St. Alban's  
Diocese.*

website: [stoswaldschurch.org.uk](http://stoswaldschurch.org.uk)

Facebook: [StOswaldsCG](https://www.facebook.com/StOswaldsCG)

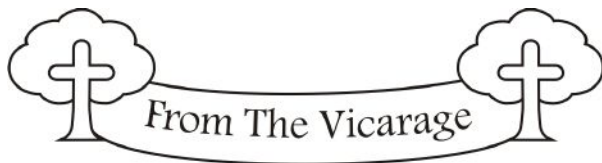
Baldwins Lane



You will find us at Malvern Way, Croxley Green, WD3 3QL,  
just off Baldwins Lane.

There is a direct footpath link from Baldwins Lane into the  
rear of the church grounds, and car park access from  
Malvern Way.

The office entrance is at the back of the church hall.



I have never been a great enthusiast for saintly relics, which so often are in any case of dubious provenance and authenticity. I do still treasure the memory of saying the Lord's Prayer before the humerus of St Francis Xavier with the Catholic priest whose church's altar contained this particular, and in that case, genuine relic, but my positive feelings then owed as much to ecumenical friendship as to devotion to the saint.

### **The Magician's Nephew**

Having said that, when I saw that Magdalen College was hosting an exhibition of "relics" associated with the distinguished former fellow and tutor **C. S. Lewis**, I knew this was an experience I didn't want to miss. Last month I duly made a pilgrimage to Oxford for that purpose. Ever since I was about 8 years old and received a copy of *The Magician's Nephew* as a Christmas present, I have enjoyed Lewis's writings and also been fascinated by the life story of one whose journey of faith took him from a bleak atheism to being "the most dejected and reluctant convert in all England" and in turn to probably the foremost Christian apologist of the twentieth century, whose portrait featured on the front of *Time* magazine. A sense of personal connection was fostered by the discovery that in his teens Lewis had resided with a personal tutor in Great Bookham, the village where I grew up. You may be interested to know that he also had a local connection, having attended a prep school

Harvest p7, Girl Guiding p12, Holiday Club p16, Watford Schools Trust p18, What's On pp 20-21, Eco-Hustings p25, Prayers p 30, Puzzles p35, Contacts p 42

in Watford. You can read about this in his memoir *Surprised by Joy*, although the town is referred to as “Belsen” and the school is now, thankfully, long defunct.

## **Shadowlands**

Amongst the exhibits on display at Magdalen, were Lewis’s pipe, tobacco jar and pen (though not his beer tankard!), documents illustrating his academic life and original handwritten manuscripts, including most movingly the neat copy of the first page of “A Grief Observed”, his searing account of the loss from cancer of his wife Joy: “No one ever told me that grief felt so like fear...” Included within the exhibition was also a clip from the film *Shadowlands* based on the relationship between Lewis and Joy. I have mixed feelings about this film in which Anthony Hopkins gives a rather reserved performance as Lewis, who by all accounts had a rather rumbunctious persona. Much better were Joss Ackland and Nigel Hawthorne in the TV and stage versions! The film also suggests Lewis lost some of his faith after Joy’s death. Whilst it is true to say that Lewis’s faith was profoundly challenged by Joy’s death, a loss of faith is hardly borne out by his last and one of his best books of Christian apologetics, *Letters to Malcolm*. After visiting the exhibition, I concluded my pilgrimage with a stroll down Addison’s Walk behind the college, where a long conversation with his friend J. R. R. Tolkien had led to Lewis’s second conversion, from mere belief in God to the full-blooded Christian conviction which subsequently sustained him.



Lewis was a complex and sometimes difficult character but sought to recognise his faults and his repentance was sincere and heartfelt. His sense of duty made him a conscientious (and hence entertaining, informative and highly popular) university lecturer and a punctilious correspondent with the many who wrote to him having read his books, including not a few children. He was generous also and after his death on 22<sup>nd</sup> November 1963 (the same date as President Kennedy), it was revealed that he had given away a substantial portion of his considerable earnings from published work. Indeed, Lewis was regarded as something of a “soft touch” and in that context I can’t resist a characteristic anecdote. On handing money to a street beggar, Lewis

was upbraided by his companion, “Why did you give him that money? You know he will only spend it on drink”. Lewis replied, “Yes, but if I hadn’t given it to him, I would have spent it on drink myself!”

Although Lewis’s writings have much to commend them today, it has to be admitted that he was a man of his times and some aspects of his work are not beyond criticism. One such aspect is his treatment of the dark skinned Calormenes in the Chronicles of Narnia children’s stories. I was reminded of this as I read *The Last Battle* on my train journey up to Oxford. But that fault should not prevent appreciation of other aspects of the book. I’ve been meaning to reread *The Last Battle* (for the umpteenth time!) ever since I last read it as a bedtime story to my then young sons (with a few appropriate emendations and omissions as required) and was struck by the thought, “This is like 1984 for children!” *The Last Battle* certainly includes a chilling depiction of how language can be debased and corrupted for political ends, something we see around us in the world too often these days. What also adds relevance is the way that, in what might be described as a prophetic warning, Lewis vividly depicts the exploitation of simple religious belief and the destruction of the environment for profit. Perhaps it’s not just children who should read this book!



## Poetry

I have loved Lewis’s Narnia Chronicles, enjoyed his science-fiction trilogy and admired his final work of fiction, the myth inspired *Till We Have Faces*. I have been stimulated and encouraged by his Christian apologetics, especially *Mere Christianity*, and have learned from some of his literary criticism. But I think that now, more than any of these, it is some of his mature poetry that I appreciate the most. Lewis always wanted to be remembered as a poet, but his style was dismissed as rather old fashioned and his poetry has only in recent years begun to be re-evaluated. For me, it is in some of his poems that Lewis’s deep spiritual life is revealed. I could quote from several examples but copyright prohibits me to do so in their entirety. I value especially *Legion* which acknowledges the author’s divided heart and prays that God would “Dissolve my parliament and intervene”, and *Footnote to all*

Prayers, which combines a recognition of the inadequacy of all our praying with an appeal to God's "magnetic mercy" to "divert our arrows, aimed unskillfully". But pretty much all of what C. S. Lewis wrote is worth reading and I am sure that his books will continue to be enjoyed by many for many years to come. Why not give him a go, if you are not already a devotee?



After a quiet summer, Church life is busy once again. The Donut Club for new Year 7s is up and running, joined by a monthly Hot Dog Club for those now in Year 8. Already plans are being discussed for Christmas and Carole Battell is taking orders for The Real Advent Calendar, which tells the Nativity story with a Fairtrade chocolate treat for each day. In



the meantime, we can look forward to our Harvest Festival on 6<sup>th</sup> October – please look out for details elsewhere in this magazine. We have a Jumble Sale on 12<sup>th</sup> October, the

popular Beetle Drive on 9<sup>th</sup> November and a Quiz being arranged for later that month. On 3<sup>rd</sup> November, Colin Nunn will be leading another reflective Taizé service at 6.30pm (replacing said Evening Prayer that day) and the annual All Souls' Memorial Service will be at 3pm on 17<sup>th</sup> November. Watch out for further details of these and other happenings on the weekly Church emailing and notice sheet.



If you are not already a "regular", it would be lovely to see you at some of these events.

Many blessings.

**Robert**



# HARVEST FESTIVAL

Sunday 6th October, services are as follows:

8am Holy Communion

10am Family Service

4pm Said Evening Prayer

For those attending at 8am or 10am, breakfast will be served in the Hall between the two services.

Once again we are inviting donations of money towards the **Bishop of St Albans Harvest Appeal**. This year the Appeal is being run in partnership with The Leprosy Mission to support a project in Sri Lanka, which provides those affected by leprosy with the means to grow their own food and raise their standard of living.

**The  
Leprosy  
Mission**



<https://www.stalbansdiocese.org/parishsupport/growing-community/bishop-of-st-albans-harvest-appeal-2024/>



In previous years we have also collected food for Alternatives in East London. However, Alternatives are changing their way of working and are no longer receiving food items. We will therefore be collecting for **New Hope**, the Watford based homeless charity, instead. It is hoped that there might also be a collection of baby items for Alternatives next year, maybe during Lent.

**[See New Hope's list of desired items on page 6.](#)**

# HARVEST FESTIVAL

**New Hope**  
PREVENTING HOMELESSNESS.  
TRANSFORMING LIVES.

New Hope has sent out the following list of desired items for our harvest giving:



coffee, tea, hot chocolate, squash, long life milk, small water bottles, drink cartons; pot porridge/pasta/noodles, baked beans, tinned tomatoes, cereals, porridge, pasta sauce, tomato/brown/BBQ sauce, salad cream, cereal bars, biscuits, chocolate spread, jam, marmite, chutney, smooth peanut butter, sugar; air freshener, cleaning products, kitchen foil, scourers, cleaning cloths, washing powder, washing up liquid; brushes, combs, shampoo, moisturiser, paper towels, toilet rolls, pump soaps, sanitary towels, shaving gel/foam, shower gel, spray deodorant, toothpaste.



# Mothers' UNION

Christian care for families



Janet Staerck writes  
11th July

For this month's meeting we welcomed Janet Tublin to speak about her time working in Hospitality for The Department For Trade and Industry. There were three of them working in Hospitality based in old buildings in Victoria Street near Westminster. Janet was interviewed on the Monday and expected to start on the Wednesday! It was a very cold building with a lot of windows, and one of the perks was a glass of sherry in the morning to warm them up! The first function she organised was for a Lord and guests with a luncheon of poached salmon and salad, strawberries and Chantilly cream, cheese board and English wine to accompany the meal. They were always allowed to eat the meal they produced, so they always selected foods they all enjoyed.

Many overseas visitors who were in trades, manufacturing or investment were entertained in the hope they would bring business to the UK. These foreign visitors were always fascinated by history so many of the old buildings around London were used, Banqueting Halls, Westminster and Lancaster House to mention a few.



Many of the hospitality events involved the royal family, Prince Philip, Prince Charles, Anthony Armstrong Jones, and The Duke of Kent (who was known for being grumpy!), and many members of the family at the royal garden parties.

Their work was varied as they had to know the background of the guests, the hierarchy of titles for the table plans, and the dietary requirements of all the guests.

It was a fascinating afternoon with many stories from a very interesting job that required long hours and could be quite stressful. Thank you, Janet, for

entertaining us, always a pleasure to have you join us.

I must say thank you to a few - Pat, Maureen, Hilary, Marjorie, Pam, Richard, Lynda and Sue for their help. It is much appreciated.



12th September

This month we were pleased to welcome a homegrown speaker, Alan Restarick to talk to us on “Being a School Governor”. When Alan retired, he found he had time on his hands and wanted to fill it with something worthwhile. So four years ago he became a School Governor at Little Green School, the School his children went to many years previous. He has not looked back, in fact he has signed up for another four years! He says he is still learning. Anyone who has life experience can become a School Governor – though obviously various checks do have to be made. Training is given.

At Little Green School there are a total of twenty Governors with varying specialisms and life skills to bring to the table. Governors are not involved in the day to day running of the School but work following the Nolan Principles in Public Office following Selflessness, Objectivity, Accountability, Openness, Honesty, and Leadership. Working solely for the School and not for the benefit of the Governors.

There are regular meetings that need to be attended, reports and policies to be read and understood. Governor day visits can include being in a classroom and seeing what is going on subject wise, chatting to children to gain their understanding, attending school events, assemblies, plays, sports days and fayres.

Alan gave us so much information – too much to include here, and he spent time answering all the questions we had. It is a time consuming

job, but Alan's enthusiasm shone through. It shows he reaps many benefits from being a Governor. Good luck for the next four years!

Next Meeting – 10<sup>th</sup> October Robert, our Vicar, will speak on “The Old Testament in Ten Great Works of Art”



# **FAMILY BEETLE DRIVE**

**ST OSWALD'S CHURCH HALL**

Malvern Way WD3 3QL

**SAT 9th NOVEMBER 5.45 - 8.00pm**

**TICKETS £6.00 each - under 5's FREE**

***SUPPER INCLUDED***

**RAFFLE & LOTS OF FUN**

***In aid of the Parish Project***

more info from 07790 330981 or  
[valraksha@hotmail.co.uk](mailto:valraksha@hotmail.co.uk)

# CROXLEY GREEN GIRL GUIDING at the MINI OLYMPICS

Philippa Mays of 4th Croxley Green Guides writes

On a glorious September Sunday Croxley Green Girl Guides, Brownies and Rainbows took part in a Mini Olympic event at Little Green School organised by the District Leaders.



The day started with an opening ceremony where three teams, Orange, Blue and Green, made up of a mix of Guides, Brownies and Rainbows from the District, brought their Torches together. Nerys from 3rd Croxley Green Rainbows said she enjoyed catching up with her friends.

There were four Zones - Aquatics, Gymnastics, Ball Skills and Athletics with an Olympic Ring won at each stage.

The Aquatics Zone consisted of games such as hot potato water balloons where a number of girls got very wet! Another was a relay

where they had to get the most water from one end of the course to the other.

The Gymnastics Zone was aided by Watford Gymnastics Club. The girls enjoyed perfecting handstands, forward rolls and cartwheels along with bar skills. Scarlet, from 1st Croxley Green Brownies, said her favourite was the Gymnastics.

The Ball Skills Zone not only had Football with a Croxley Green Football Coach but also Pickleball and Hockey. Volleying, dribbling, shooting and footwork were all practised with many girls showing great talent. Chloe and Lillia of 2nd Croxley Green Guides loved scoring goals for fun and seeing how many volleys they could get.

The Final Zone was athletics. There were relays such as sack race, hurdles and egg and spoon between the teams with Blue winning overall.

Finally, the Closing Ceremony where the medals, badges and the final ring was handed out. The girls were all awarded the Paris 2024 Olympics badge from WAGGGS, the World Association of Girl Guides and Girl Scouts. Well done to everyone and a massive thank you to all the leaders and helpers.

If you would like to join the fun and volunteer with Girl Guides in Croxley Green please contact us via [www.girlguiding.org.uk](http://www.girlguiding.org.uk) or [girlguiding.croxley@gmail.com](mailto:girlguiding.croxley@gmail.com)



**ST. OSWALD'S**  
**JUMBLE**

---

 **SALE** 

---

**Saturday 12th Oct**

**2.00pm - 4.00pm**

**Entry £1**

**CLOTHES SHOES TOYS**

**BRIC-A-BRAC**

**JEWELLERY and more.....**

**REFRESHMENTS in the Church**

*Please bring any donations of items  
to sell to the Church Hall Mon 7th -  
Fri 11th Oct from 7.00pm - 8.00 pm*

**SORRY - NO FURNITURE, BOOKS  
DVD's OR ELECTRICAL ITEMS**

**Malvern Way WD3 3QL**

**more info from 01923 896632**



## Hymn of the month

My choice this month celebrates the mystery and impenetrability of God, albeit a God who is ready to smile upon us and shower us with his grace:

*God moves in a mysterious way his wonders to perform;  
He plants his footsteps in the sea, and rides upon the storm.  
Deep in unfathomable mines of never-failing skill  
He treasures up his bright designs and works his sovereign will.*

This is the work of William Cowper (pronounced Cooper) (1731-1800), who produced some of the finest religious verse in the English language despite a life spent in acute mental torment. Cowper came from a distinguished literary and ecclesiastical family - his father was chaplain to George II and his mother was descended from the poet John Donne. As a young man he began to suffer from bouts of depression. His one anchor was his strong faith. In his mid-thirties he was befriended by John "Amazing Grace" Newton and moved with him to Olney, Buckinghamshire, where he did what he could to assist in the life of the parish where Newton was curate.

Cowper and Newton wrote hymns to be sung at the weekly prayer meetings held in Olney church. *God moves in a mysterious way* was written in the early 1770s. Although Cowper was depressed the hymn's overall theme is one of resounding Christian hope:

*Ye fearful saints, fresh courage take;  
The clouds ye so much dread are big with mercy,  
and will break in blessings on your head . . .  
His purposes will ripen fast, unfolding every hour;  
The bud may have a bitter taste but sweet will be the flower.*

The tune usually used for this hymn is London New, which pre-dates the words by over a hundred years. It originated in the Scottish Psalter of 1635 (the Scots, especially, were very keen on singing metrical psalms - psalms turned into metrical verse and sung to simple hymn tunes). The tune was arranged into its present form and published in London in 1671.

Quentin Phillips



**Hold the Front Page!**

**Holiday Club 2024**

**St Oswald's Church**

**Wednesday 24 July  
to Friday 26 July**

This year our holiday club was based on stories from the Old Testament and read out from our Newspaper publication called *The Ancient Times*. Sixty children, from reception to year six, met in church for some lively worship led by our teenage helpers. We covered the stories of Jonah and the Whale, Noah's Ark, Tower of Babel, David and Goliath and Moses in the bullrushes.



Animals in Noah's ark



The children enjoyed craft, singing and games. We called the afternoon session “The Big Build.” By the end of the week the church was full of life size (well almost) junk models of animals to go into the full size Ark. The older groups made the elephant, giraffe, flamingo and llama. The younger groups made penguins and crocodiles – or were they alligators? I’ll tell you in a while, when I see you later!!

Ah, the jokes. Each day we had an editorial session with the children. This was their opportunity to tell us what was important to them and what they thought about each story. They wrote prayers and jokes which were read out in church during our final worship.

By day two the animals were joined by a junk model of goliath and the tallest Babel towers each team could build. There are lots of photos of our activities on St Oswald’s facebook page. Holiday Club ended with a picnic on the grass outside the church.



We would like to thank our forty strong volunteer and young helper team for giving their time and talents to help this worthwhile church mission. We are already planning for Holiday Club 2025 and will confirm dates in the New Year.

Vanessa Mackay and Julie Carpenter



St Oswald's was fortunate to host Fiona Penny, Schools Worker from Watford Schools Trust, on 8th September. She writes...

*Hello to you all from Watford Schools Trust!*

Our vision at Watford Schools Trust is to 'give every child a clear understanding of the Christian faith'. In 23/24 we did this by delivering 395 lessons, 41 assemblies and 3 week long Explore events in Primary schools in the Watford area. Each of these was led by one of our three part time schools' workers.



*Pancake day assemblies*



*Noah's ark story lessons in Reception*



*"I can be brave" activity in Explore*



*Christingle lessons with our puppet*

Our highlights included: using our new puppet Chris to explain the meaning of Christingle, Explore at St Luke's church where we welcomed children from two local schools, seeing the reaction of the children to our disgusting pancake assembly and bringing Bible stories like Noah's ark to life.

I recently had the pleasure of visiting St Oswald's Church to share a little more about our work. This was a wonderful blessing to me as we don't do any of this alone. Our lessons and assemblies are offered free to schools due to the generosity and support from churches and individual Christians. As we enter a new academic year perhaps you would consider supporting us in prayer, by volunteering or with financial support.

If you would like any more information about us please visit [watfordschoolstrust.org.uk](http://watfordschoolstrust.org.uk)

Fiona Penny  
Watford Schools Trust Schools Worker

## CROXLEY PARISH NURSES

### Croxley Parish Nurses Contact Details

Cathy Scarborough  
[croxleyparishnurseecathy@gmail.com](mailto:croxleyparishnurseecathy@gmail.com)  
07562 515791



Ruth Owusu-Mensah  
Registered Mental Health Nurse  
[croxleyparishnuseruth@gmail.com](mailto:croxleyparishnuseruth@gmail.com)  
07305084948  
[www.croxleyparishnurse.org](http://www.croxleyparishnurse.org)



# WHAT'S ON?



## Services

Holy Communion on Sundays 8 am and 10 am, except first Sunday in the month when there is a Family Service at 10 am.

Holy Communion on Wednesdays at 11 am.

Evening Prayer on the first Sunday at 4 pm

Morning Prayer on Tuesdays and Thursdays at 9 am.

Sunday School meets each Sunday, except first Sunday in the month, at 10 am

## Café O

Monday mornings in the church from 9 am to 12 noon.



## **Mothers' UNION**

Christian care for families

Mother's Union meets on the second Thursday of each month at 2.30 pm in the church.

10th October Robert, our Vicar, will speak on "The Old Testament in Ten Great Works of Art"

8th November Christmas crafts

13th December Christmas celebration

Men's Breakfast meets in the hall monthly on Saturdays at 7.45 am.

19th October -Richard Doughty 'Views from Down Under'

16th November - John Malcolm 'Interesting journeys'

14th December - Christmas contributions

## Donut Club for Year 7s

3.30 to 5pm Fridays in term time

## Hot Dog Club for Year 8s

5.15 to 6.30 pm monthly on first Fridays in term time including 4th October, 8th November, 6th



## DATES FOR DIARIES

### OCTOBER

Sunday 6th



HARVEST FESTIVAL  
8am Holy Communion  
followed by Harvest breakfast  
10am Family Service  
4pm Said Evening Prayer



Saturday 12th 2.00 to 4.00pm

Jumble Sale

Saturday 19th 9.30am

Church Clear-up morning

### NOVEMBER

Sunday 3rd 6.30pm

Taizé service

Saturday 9th 5.45 to 8pm

Beetle Drive

Sunday 10th

Remembrance Sunday,

2.30pm Civic service at All Saints'

Tuesday 12th 8pm

FGPC meeting

Sunday 17th 3pm

All Souls' service

Tuesday 19th 8pm

PCC meeting

Wednesday 27th 8pm

PCC meeting with the Archdeacon



### DECEMBER

Sunday 1st 10am  
4pm

Christingle service

Christmas pudding and  
craft evening

Friday 20th 2.15pm

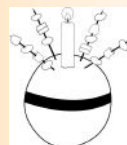
Pop-up carols

Sunday 22nd 6.30pm

Carol service

Tuesday 24th 4pm

Crib service



### LIVING IN LOVE AND FAITH


The Vicar will lead the Church of England course at the Vicarage on five Mondays from 30th September until 28th October at 8 pm

# A CROXLEY RAMBLER

Brian Thomson walks the Thames path at Cookham  
Wednesday 18th September

Writing this in between rain showers, last week's warmth is a distant memory. But I was able to take advantage of our little Indian summer to explore a bit more of the Thames valley. My aim, as well as walking the Thames path, was to remedy a gap in my experience by travelling on the Elizabeth line.

The morning was cool as I set off into London to catch the Elizabeth line from Bond Street to Maidenhead. It was already a lengthy walk at Bond Street before reaching the cavernous platform and settling into the air conditioned comfort of the half-empty train. The journey took me past large construction works at Old Oak Common for HS2 and new tower

 blocks near Southall until my thoughts about such developments were interrupted by the tannoy. The announcer said that my Oyster card would not be valid beyond West Drayton, something not at all obvious from the TFL website. It meant getting off the train at Hayes to buy a separate ticket for the rest of the journey. So much for speed and efficiency!

From Maidenhead station I walked through more construction sites to the High Street which was quiet and whose collection of shops reminded me of Watford - not quite as upmarket as I had expected. I picked up a footpath called the Green Way which follows a flood relief creek northwards amongst smart new flats. Unfortunately for me, flooding soon made my route impassable, but after a detour through a car park I was able to rejoin the path. It took me through open spaces amongst Maidenhead's suburbs and into flat, open fields.

I spotted a couple of damselflies - one red and one blue - and hedges decorated with red hips and haws. By now I was beginning to feel warm in the sunshine, so gradually shed some of my layers. The fields had been harvested and there was a faint scent of rotting cabbage from the remaining stalks of oilseed rape. A large group of Canada geese was grazing on the residues while three or four red kites wheeled overhead.



## Cookham Reach

The National Trust owns several small areas of common land nearby and from Widbrook common there was a good view of the magnificent country house at Cliveden on the hill to the east. Before long I could hear the sound of children at lunchtime play and I emerged onto the moor at Cookham village. Cookham is a delightful riverside spot and I was glad to find somewhere on the bank for a picnic.

Life seems to be a bit slower by the river. There were several smart boats moored nearby and some opulent properties with their boat houses opposite. But not much was happening. I followed the riverside path into the village through the churchyard at Holy Trinity. This 12th century church has several claims to fame. The site was previously the monastery of a Saxon Queen - featured on the TV programme 'Digging for Britain'. Moreover, the painter Stanley Spencer used the churchyard for his vision of the last days when the good people of Cookham emerge

from their tombs to be transported to heaven on board a Thames pleasure steamer. For him, Cookham was heaven on earth and I find his eccentric Christian art refreshing.

I made my way to the little gallery of his paintings and enjoyed the current exhibition which features paintings by his brother Gilbert who concentrated on more straightforward rural scenes.

Leaving the village I eventually regained the river path on the bank opposite the boat house at Cliveden. The woods on the escarpment were showing early signs of autumn colour.

From there it is a pleasant walk beneath trees and beside the slow-flowing Thames to the attractive arches of Maidenhead bridge.



Holy Trinity Cookham





## Eco-Hustings at St Oswald's

*St Oswald's Eco-Group organised a Hustings event on 24th June where all nine candidates for the general election gave their views with a particular focus on the environment. Richard Doughty reports*

Some 200 local residents crammed into St Oswald's first ever eco-hustings just a few days before the general election to hear the views of nine different parties on key environmental issues before broadening out into other topics. The sitting Conservative MP, along with Labour, Lib Dem, Green and Reform UK candidates, were joined by the lesser known Party of Women, Rejoin EU, Social Democratic Party and UK Voice.

With so many candidates, the event was run on a tight schedule. Jon Cox led the tricky practical arrangements to ensure the candidates were treated fairly and the event was secure. John de Braux ably chaired the meeting. The whole event was recorded and is now available on the church website.

<https://stoswaldschurch.org.uk/Groups/423477/Hustings.aspx>

The event began on a unifying note with **sewage dumping** earning a universal thumbs down from all candidates, and drawing out the memorable words from one participant: "No one wants to see a parade of no 2s floating down the middle of the River Chess!" There was general agreement on tougher penalties and better monitoring of the water companies, a call for their immediate nationalisation, a sewage tax on operator profits that would be reinvested in new infrastructure, and a ban on bonuses for CEOs while sewage dumping continued under their watch.

The second question - around the future of **sustainable housing** - was not going to be solved by destroying green belt but rather in building on brown field sites and using plenty of empty/abandoned homes, according

to several candidates. One said they'd end the "disastrous" right to buy policy that depleted valuable housing stock. There were calls for better rights for renters, making renting easier and stabilising rent prices. And landlords should be encouraged back into the rental market with tax breaks.



The third question was how to achieve **net zero carbon emissions**. One speaker emphasised the UN's goal to reduce emissions by 45% by 2030 and reach net zero by 2050. Another argued that people needed to be taken along at their own pace. They suggested granting two-year gas licenses to give time to build more nuclear reactors. Another candidate called for an army of green jobs to make the UK energy-independent. It was "incredibly important, given the war in Ukraine".

To the final eco-question - how do you plan to **protect the natural environment**? - managed wildflower meadows, conserving and enriching beauty spots, and regenerative farming all got a mention. Some candidates called for a wholesale return to biodegradable

packaging. Another speaker would hold supermarkets to account, set up an additional three national parks, plant 60 million trees in the UK and “stop dumping waste on other countries”. And some candidates suggested outright bans on plastic food containers and national bottle deposit schemes to encourage children to do the right thing.



**Immigration** came up first after the eco-discussion with some candidates arguing strongly that asylum seekers and other legal immigrants with the qualifications needed should be put straight back into work and start paying back into society after a quick and efficient screening. However, Illegal immigrants coming from a ‘safe country’ like France should be sent back to France.

Racism had to be reduced and countered; lack of housing was due to underinvestment, not immigration. Another candidate demanded compassion be put back into the discussion - asylum seekers should be treated as people, not things. Successive governments should not be able to encourage immigration as a short-term fix to fill skills gaps in areas like the NHS and social care. Rather, they should think long-term, look after their skilled foreign workers who should, for instance, be allowed to bring in their families.

On **finance, taxation and public spending**, there was one short answer from one candidate: “Fully funded and fully costed” - a sentiment picked up by several others. The government had to have a plan it could deliver: “We have to restore people’s trust in politics.” Another talked of using a wealth tax on the super rich to help fund investment in the NHS, social care, greater education opportunities, transport, housing and local government, and a carbon tax to help transition to net zero. There were calls for affordable tax cuts and a special tax on banks to fund the NHS and social care. Plus a turnover tax on foreign companies based in the UK.

**Foreign aid** highlighted huge differences between some of the candidates. Two were arguing for a 50% cut in aid, switching it to the NHS and putting people in the UK first; another wanted to focus on the very poorest countries that needed aid most. One called for more transparency showing where the aid was going, while we were reminded by another candidate that the amount of inward investment to the UK far outweighed anything we sent abroad.

And finally how could any of us improve the **NHS**? For one candidate it was simple - look to national health services like those in Finland, Sweden, France and Germany, which were, yes, better than the NHS. We needed to train more doctors - so why not, for instance, set up special schools to train children to become doctors - think long-term. Let's identify mismanagement and get rid of middle management tiers, said others. One would make space for 40,000 extra appointments and end the Monday morning scrap to see a doctor, see a GP within 24 hrs (emergency cases), with a maximum 62 days wait to receive cancer treatment and ensure care workers received at least £2 above the minimum wage.

Hopefully, those who attended left the meeting more informed as they cast their votes.

## HOMOEOPATHY



**Lynn Williamson**  
**Homoeopath**  
**L.C.P.H., M.C.P.H., A.R.H.**

**01923 442759**

**Let your body follow its natural healing path  
through use of this holistic system of treatment.**

## *The Osteopathic House*

Experienced Qualified Practitioners

**OSTEOPATHY, ACUPUNCTURE,  
CRANIAL OSTEOPATHY, HOMEOPATHY, HEAD MASSAGE,  
MASSAGE THERAPIES, REFLEXOLOGY, SPORTS MASSAGE,  
ADULT COUNSELLING, CHILDREN COUNSELLING,  
GIFT VOUCHERS AVAILABLE**

BUPA and PPP recognised specialist clinic.  
Philip Aarons B.Sc (Ost) DHMSA MICO & Associates  
Principal Practitioner @ The Osteopathic House

**YOU ALWAYS FEEL FINE WHEN YOUR SPINE IS IN LINE**

**The Osteopathic House, 38 Church Street,  
Rickmansworth, Herts., WD3 1DJ Telephone: 01923 896655**



## Intercessions for each week

The following suggestions for prayer week by week are by no means exhaustive. They are intended as prompts to encourage our prayers for: the life of our church; the charities with which we are connected; the roads of our parish; the village and the wider community. Other suggestions for prayer may be found on the weekly pew sheet.

Please remember in your prayers the sick, those who care for them, and those who mourn; our 10% mission giving recipients: USPG, CMS, Christian Solidarity Worldwide, Church Army Marylebone Project, Alternatives Trust East London, Watford Schools Trust and A Rocha.

### **Sunday 29 September to Saturday 5 October**

Home Group and Prayer Fellowship  
Trinity Project and Christian Solidarity Worldwide  
Durrants Drive, Hastings Way, Lewes Way, Norwich Way  
Parish, District and County Councillors

### **Sunday 6 to Saturday 12 October**

Sunday School  
Trinity Project and New Hope Trust  
Merchant Taylors Place, Appleby Drive, Gloucester Court, Hertford Close,  
Pevensey Way, St Mawes Close, Scarborough Drive, Scotney Close  
Our Diocesan Bishops, Alan, Richard and Jane

### **Sunday 13 to Saturday 19 October**

Our Mission Action Plan  
Trinity Project and Christian Aid  
Dover Way, Ludlow Way, Richmond Way, Warwick Way  
Our local shops and businesses



### **Sunday 20 to Saturday 26 October**

Choir and church musicians  
Trinity Project and Watford Schools Trust

Canterbury Way, Gade Bank, Links Way, Rousebarn Lane  
Our local schools

**Sunday 27 October to Saturday 2 November**

The Vicar and Readers  
Trinity Project and The Children's Society  
Dorrofield Close, Hazelwood Road, Mayfare, Sansom Close,  
Watford Road  
All Saints' Church

**Sunday 3 to Saturday 9 November**

Mothers' Union and Men's Breakfast  
Trinity Project and USPG  
Beechcroft Ave, Oakleigh Drive, Sycamore App, Sycamore  
Road, Valley Walk  
Parliament and our MP Gagan Mohindra

**Sunday 10 to Saturday 16 November**

Safeguarding Team and Pastoral Contact Group  
Trinity Project and Watford and Three Rivers Refugee Partnership  
Byewaters, Evensyde, Basildon Close, Gill Close, Heckford Close,  
Longmans Cl  
Shaftesbury Court

**Sunday 17 to Saturday 23 November**

Uniformed organisations – Rainbows, Brownies and Guides  
Trinity Project and A Rocha  
Girton Way, Malvern Way, Sherborne Way, Winchester Way  
Churches Together in Croxley Green

**Sunday 24 to Saturday 30 November**

Parish Magazine  
Trinity Project and Alternatives  
Claremont Crescent, Lancing Way, Winton Crescent, Winton Drive  
Our Parish Nurses



## Funerals at St Oswald's

Joan Morris 2nd July

Malcolm Tilley 8th August

May they rest in peace. Remember those who  
mourn.

## **ST OSWALD'S REMEMBRANCE BOOK**

### OCTOBER

**George S. PENMAN** ~ 24th Oct 1923 to 2nd Oct 2002

**Jean Mary SCOTT** - 23 September 1931 to 3rd October 2016

**Alfred MORRIS** ~ 9th Jan 1896 to 4th Oct 1987

**Stephen John BONE** ~ 22nd April 1934 to 7th Oct 2002

**George Ernest McISACK** ~ 19th March 1915 to 9th Oct 1970

**David William RESTARICK** ~ 22nd Dec 1926 to 11th Oct 2007

**Sydney George HOOK** ~ 14th Feb 1906 to 15th Oct 1990

**Theresa (Tess) Dawn HAWKINS** - 10th Nov 1947 to 15th Oct 2014

**Jean Grace HOMER** - 26 May 1932 to 18th Oct 2015

**Clifford Ernest Patrick BLACKWELL** - 2nd Mar 1930 to 21st Oct 2015

**Diana Mary DAVIES** ~ 17th Jan 1919 to 23rd Oct 2006

**Geoffrey George Victor TILLEY** ~ 8th Nov 1932 to 23rd Oct 2011

**John Douglas BATCHELOR** - 14th Oct 1927 to 24th Oct 2018

**Arthur Alfred William LEE** ~ 18th June 1909 to 28th Oct 1986

**Lizzie KING** ~ 5th Sep 1886 to 29th Oct 1969

**Mary OLIVER** ~ 1st Sep 1911 to 29th Oct 1994

**Joyce MANDEVILLE** ~ 10th Aug 1921 to 31st Oct 2009

**Reg HENDERSON** - 17th Feb 1917 to 31st October 2005

### NOVEMBER

**Richard John PALMER** - 25th June 1936 to 1st Nov 2014

**Brian David HOWARD** ~ 3rd Nov 1958 to 5th Nov 2010

**Eric George HART** ~ 6th June 1910 to 7th Nov 1976

**Margaret Violet MACLEAN** ~ 13th Jan 1911 to 9th Nov 2010



**Stephen John SHEPPARD** ~ 24th Mar 1953 to 9th Nov 2015

**Gillian Elizabeth POWELL LOUGHRAN** ~ 13th Feb 1951 to 12th Nov 1993

**John Arthur HOWARD** ~ 24th Oct 1924 to 19th Nov 1974

**Valerie Jean GRIFFITHS** - 19 June 1934 to 20th November 2023

**Audrey Jean RUMMERY** ~ 10 Dec 1931 to 23 Nov 2015

**Nellie Elizabeth MANNING** ~ 13th Dec 1906 to 24th Nov 2004

**Jessie Gertrude BARBERO** ~ 29th April 1913 to 25th Nov 2004

**Sydney George SEARLE** ~ 20th May 1922 to 25th Nov 2010

## **A Prayer for Peace**

from the Archbishop of Canterbury's Reconciliation Ministry

Almighty God, our heavenly Father, we come before You today with heavy hearts, yet with unwavering faith. We pray for peace in the world, a peace that transcends understanding, a peace that heals the wounds of the past and fosters hope for the future.

May Your Spirit of love and reconciliation dwell in the hearts of our leaders, inspiring them to govern with wisdom, justice, and compassion. Grant them the courage to seek peaceful solutions to conflict and to prioritize the well-being of their people.

Bless our communities with harmony and unity. May we learn to live together in peace, respecting our differences and celebrating our common humanity. Inspire us to be instruments of Your peace, extending forgiveness, compassion, and support to those who suffer.

May Your light dispel the darkness of hatred and division. Grant us the strength to work tirelessly for a world where all people can live in dignity and security.

In Your holy name we pray, Amen.



West Hertfordshire  
Teaching Hospitals  
NHS Trust

CROXLEY PARISH NURSE  
Churches *in*  
CROXLEY GREEN CIO  
Registered Charity Number: 1170287

# CANCER SUPPORT GROUP

We welcome anyone that has been affected by cancer. Join our warm and friendly group to meet others, share your experiences, learn coping techniques

**The 2024 Sessions are**

First Thursday of the Month **2:30–4:00pm**



**June 6th, July 4th Aug 1st, Sept 5th  
Oct 3rd, Nov 7th, Dec 5th**

## MORE INFORMATION

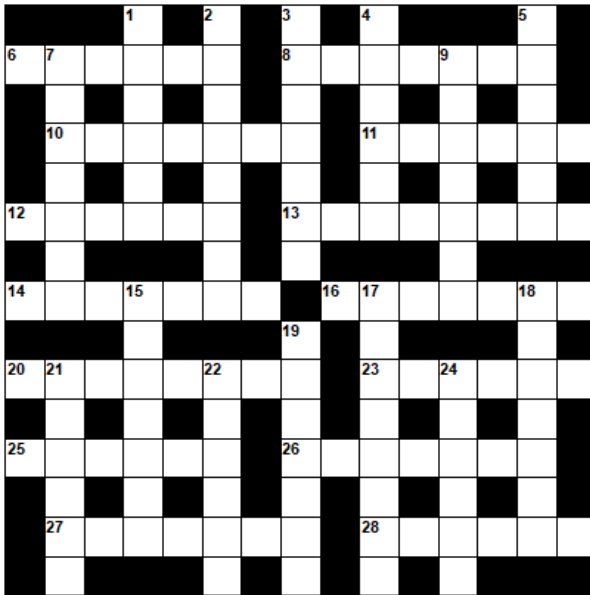


Please call 01923 436 326 or email [laura.bailey19@nhs.net](mailto:laura.bailey19@nhs.net) or [croxleyparishnurseecathy@gmail.com](mailto:croxleyparishnurseecathy@gmail.com)



All Saints Church, The Green ,  
Croxley Green,  
Rickmasworth,  
WD3 3HJ

**MACMILLAN  
CANCER SUPPORT**



**Cryptic  
Crossword by  
Richard Lee**

**Down**

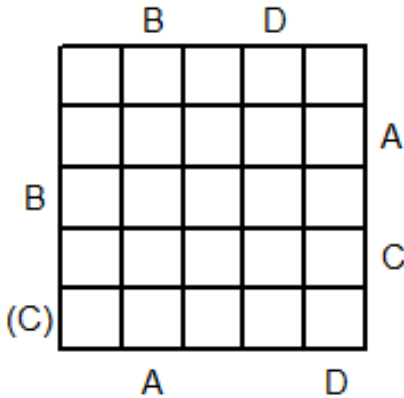
**Across**

- 6 Lets no diversion be taken (6)
- 8 Imitate a bird at the end of the day (7)
- 10 Looks at a greeting (7)
- 11 Quicker one not taking food (6)
- 12 Sharp article to create cloth (6)
- 13 Cheerfully working in galley (8)
- 14 Warm layer for pagan? (7)
- 16 Seaside romp causes illness (7)
- 20 A quiet guardian, that's clear (8)
- 23 Stay and iron furiously to create security (6)
- 25 It's callous looking back into the boring, flat urban sprawl! (6)
- 26 Seminar to help create sailors (7)
- 27 Hearty drink (7)
- 28 Tries to create dissertations (6)

- 1 Air movement making a hasty departure (6)
- 2 Portal to captivate (8)
- 3 Note it is a time to pickle (7)
- 4 Blow in, giving the bird (6)
- 5 Make aware about meat (6)
- 7 Track when royalty is aboard the platform (7)
- 9 Use a gas mixture to satisfy (7)
- 15 Leaflet or farm machine (7)
- 17 Resident gets introduced (8)
- 18 Smash fist, say, to make happy (7)
- 19 South trip causing a fall (7)
- 21 Unauthorised copying of violence at sea (6)
- 22 Church den makes a creamy cake (6)
- 24 Best end is French (6)

## Two More Puzzles by Richard Lee

### ABCDx



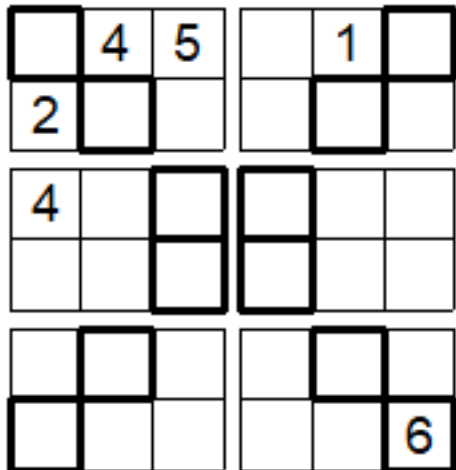
### ABCDx Puzzle

Each of these puzzles has the letters ABCD placed randomly in each row and column with the remaining squares left empty. The exact combination of letters and spaces used is shown in the title line above each puzzle ('x' represents a space). The clues down each side and across the top or bottom show you the first (or, if in brackets, the second) letter which would be encountered in that particular row or column. All you have to do is to work

out where the original letters and spaces were placed.

### Sudoku X Puzzle

In the Sudoku X square each row, column, individual 3x2 box and the two main diagonals all contain one each of the numbers 1 to 6. The puzzle, just like an ordinary Sudoku, is to work out, using the numbers given, where the rest fit in!



J	N	A
E	L	E
L	Y	B

### WORDBLOCK

How many words of three letters or more can you make from these nine letters by moving from one square to the next. Start in any square, then move to any adjacent square, including diagonally, to join up a word. Make sure you don't skip a square or use the same square twice in any word. No proper nouns, abbreviations or foreign words. I reckon anything more than 20 words is good going. What is the nine letter word?



# **JAMES PEDDLE LTD**

## **INDEPENDENT FUNERAL DIRECTORS**

**James Peddle is still independently owned and managed.  
They pride themselves on giving a caring and understanding  
24 hour personal service.**

**Home arrangements by appointment.**

**Golden Charter Pre-payment Plans.**

**Probate Advisory Service**

**(24 hour service)**

**10 Moneyhill Parade**

**Uxbridge Road**

**Rickmansworth**

**HERTS WD3 2BE**

**(01923) 772013(01923) 775013**

**172 New Road**

**Croxley Green**

**Rickmansworth**

**HERTS WD3 3HD**

**51 Lower Rd.**

**Chorleywood**

**HERTS WD3 5LG**

**01923 286102**



# Silver Eco Church Award Certificate

This is to certify that

## St Oswald's Church & Hall, Croxley Green

has won a Silver Eco Church Award in recognition of their efforts to care for God's earth in each of the following areas (as applicable):

- Worship and Teaching
- Management of Buildings and Land
- Community and Global Engagement
- Lifestyle

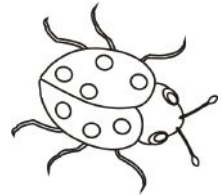
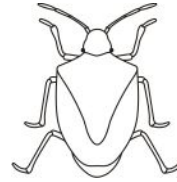
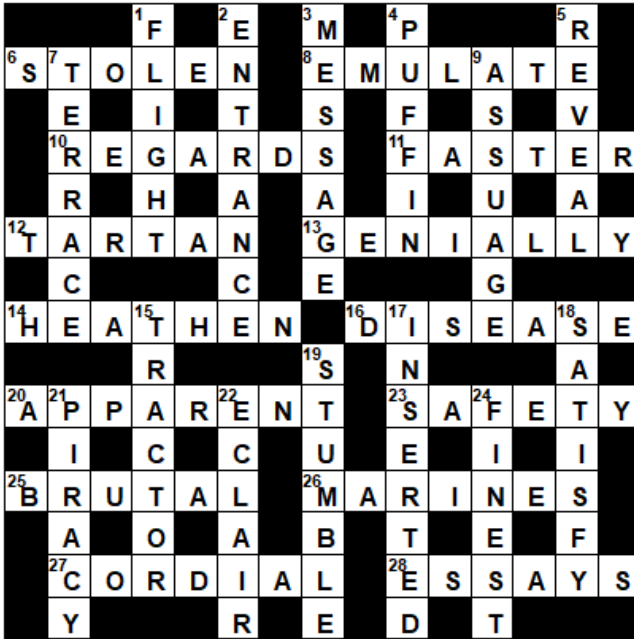
Signed Andy Atkin Date 30 July 2024  
CEO, A Rocha UK



[ecochurch.arocha.org.uk](http://ecochurch.arocha.org.uk)  
[arocha.org.uk](http://arocha.org.uk)



# PUZZLE ANSWERS



## ABCDx

		B		D	
	C	x	A	D	B
	D	B	x	C	A
B	B	C	D	A	x
	A	D	B	x	C
(C)	x	A	C	B	D
	A			D	



3	4	5	6	1	2
2	1	6	5	4	3
4	5	2	3	6	1
6	3	1	4	2	5
1	6	3	2	5	4
5	2	4	1	3	6

## WORDBLOCK ANSWERS (from Oxford ED)

9: jellybean.

5: alley, anele, belly, jelly, nelly

4: ally, bean, bell, elan, jell, lane, lean, yeal, yell

3: alb, ale, all, bel, ben, bey, bye, ell, eye, lea, ley, lye, nae, neb, yea.



# **THE KITCHEN**

**CAKES FOR ALL OCCASIONS**

**CROXLEY**

**AT THE KITCHEN, WE BAKE BEAUTIFUL  
CAKES AND CUPCAKES  
USING FAIRLY TRADED INGREDIENTS.**

**WE CATER FOR BIRTHDAYS, WEDDINGS,  
CHRISTENINGS AND ALL OTHER  
CELEBRATIONS.**

**WE WOULD LOVE TO DESIGN A CAKE  
TO SUIT YOUR OCCASION AND BUDGET**

## **FIND US:**

**198 WATFORD ROAD, CROXLEY GREEN**

**WEB: [WWW.THEKITCHENCROXLEY.COM](http://WWW.THEKITCHENCROXLEY.COM)**

**TWITTER: @KITCHENCROXLEY**

**PHONE: 07912 847295**

**St Oswald's Church, 17 Malvern Way, Croxley Green,  
Rickmansworth, Herts. WD3 3QL**

Contacts

**Vicar:** Revd. Robert Riley-Braley tel:01923 332244  
email: vicar@stoswaldschurch.org.uk

**Lay-Reader:** Tony Barton  
email: tony.barton@stoswaldschurch.org.uk

**Lay-Reader:** Magdalena Pletsch  
email: magdalena.pletsch@stoswaldschurch.org.uk

**Church Wardens:** Helen McAlpine  
warden1@stoswaldschurch.org.uk  
Anne-Georgina Barnes  
warden2@stoswaldschurch.org.uk

**Treasurer:** Karen Pryse  
email: treasurer@stoswaldschurch.org.uk

**PCC Secretary:** Brian Thomson  
email: secretary@stoswaldschurch.org.uk

**Hall Bookings:** email hall-bookings@stoswaldschurch.org.uk  
General Enquiries email: info@stoswaldschurch.org.uk

**EDITOR'S NOTE**

Updated information on services and activities at St Oswald's will be posted on the church website [www.stoswaldschurch.org.uk](http://www.stoswaldschurch.org.uk), the church's Facebook page and the weekly email Vicar's letter.

The next edition of the magazine will be published at the beginning of December 2024. Please send items for the next edition by Sunday 17 November 2024 to [magazine@stoswaldschurch.org.uk](mailto:magazine@stoswaldschurch.org.uk)